

Categories	Procedure	Total Charges	Procedures per month	Revenue per month
Internal Medicine	Bronchoscopy			
	Endourology Exam			
	Endourology Intervention			
	GI Endoscopy- Lower			
	GI Endoscopy- Upper			
	Rinoscopy			
	Vaginoscopy			
Dermatology	Canine TCI			
	Otoscopic Exam			
	Otoscopic Deep Cleaning			
Surgery	Arthroscopy			
	Lap Spay			
	Laparoscopic Exploratory			
	Long Lap Surgery			
	Thoracoscopy			
Avian and Exotic Pets Endoscopy	Oroscopy			



Instagram



LinkedIn



Facebook



Youtube

Aohua Endoscopy Co.,Ltd.

E-mail: vets@aohua.com

ISO 9001/ISO 13485 Certified
v2.0_2411

China

No.66, Lane133, Guangzhong Road,
Minhang District, Shanghai

Tel : 021-5221-0929

Germany

Fichtenstrasse 27,
Brunnthal, Munich

Tel : +49 (0) 81 04/8908-10

Since 1994

AOHUA



Compact
Design



User-Friendly
Tools



Patient
Management



Enhanced
Imaging



OR-160

All-in-one Vet Endoscopy System

Compact Design

Upgraded Platform: Motus 4.1

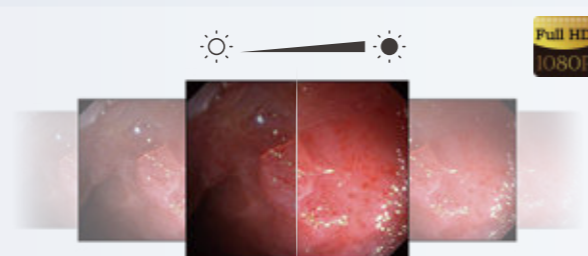
- A dedicated platform specifically designed for Aohua Endoscopy systems.
- Capable of processing Full HD images for enhanced diagnostic clarity.
- Real-time image transmission with no delay, providing smooth visuals.
- Fast and responsive operation, allowing for efficient handling during procedures.



Big Touch Screen & Better Display



- Revolutionary touch screen simplifies operation significantly.
- Larger 18.5" display with 20% more effective viewing area compared to the OR-100



- Enhanced brightness for clear visibility even in strong light or outdoor settings.
- Full HD medical-grade display ensures sharper images for precise diagnostics.

Expanded Applications in a Single Unit



- One processor supports both flexible and rigid endoscopes with hot-swappable switching.
- Ideal for use in Internal Medicine, Dermatology, Surgery, Avian/Exotic Pets Endoscopy and etc.

Enhanced Imaging

Intelligent Lighting System

The Intelligent Lighting System (ILS) enables automatic adjustment of brightness and lighting mode according to the current situation, with a lifespan of up to 30,000 hours.

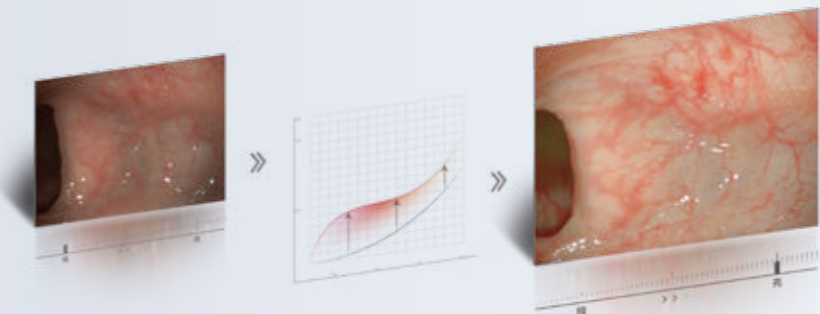
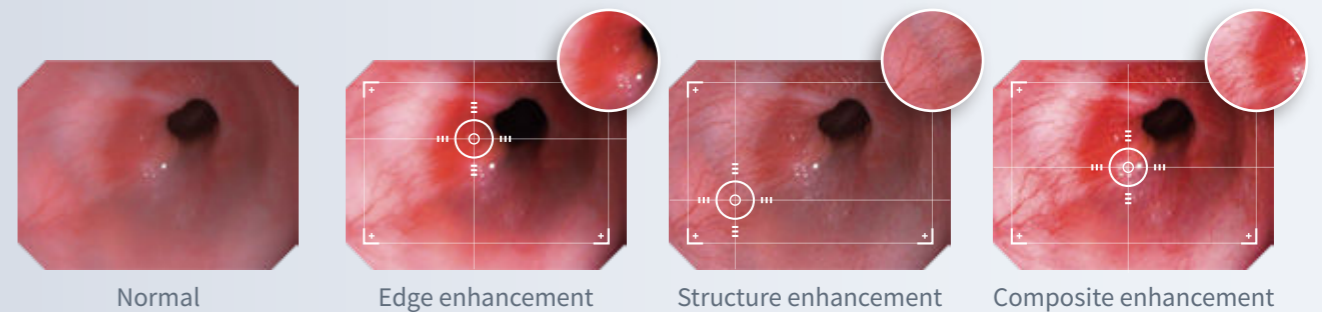


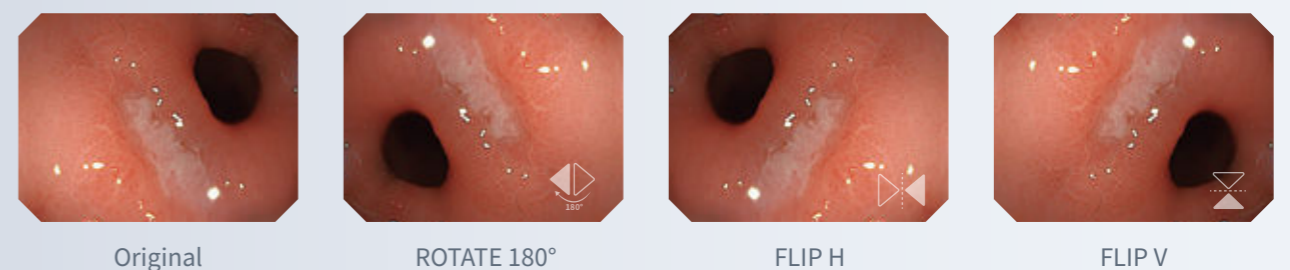
Image Enhancement

With three enhancement modes and three intensity levels, you can always find the ideal image enhancement setting for optimal clarity and detail visibility.



On-screen Rotate

Enhance the user experience by rotating the on-screen image, especially when using longer or rigid scopes that can't achieve larger rotation angles.



Patient Data Management

Choose Data Storage Method



Local Storage: Built-in 128GB memory for convenient local data saving, allowing for easy access and export from the processor at any time.



USB Storage: Automatically saves to both local memory and USB drive when a USB is inserted.



FTP Automatic Transfer: Connect the processor to a computer via LAN or Wi-Fi for automatic file transfer, allowing direct data transmission to the computer.

Save Patient Information

- For new patients, a new profile needs to be created.
- For returning patients, select their profile from the patient management system.
- Allows editing of select patient information.
- Enables adding comments after completing the procedure.



NEW PATIENTS PROFILE



PATIENT MANAGEMENT

Automatic File Categorization

- Automatically generates individual folders upon patient creation and selection.
- Stores all images and videos in the respective patient folder for easy access.
- Simplifies organization and categorization of patient data.



PATIENTS PROFILE



User-Friendly Tools

Intuitive User Interface



All essential functions are directly accessible from the main interface, making operations more intuitive. If you prefer to capture images or videos without the on-screen interface, you can choose to hide it.

Customizable Shortcut Buttons



Flexible Endoscopy



Rigid Endoscopy

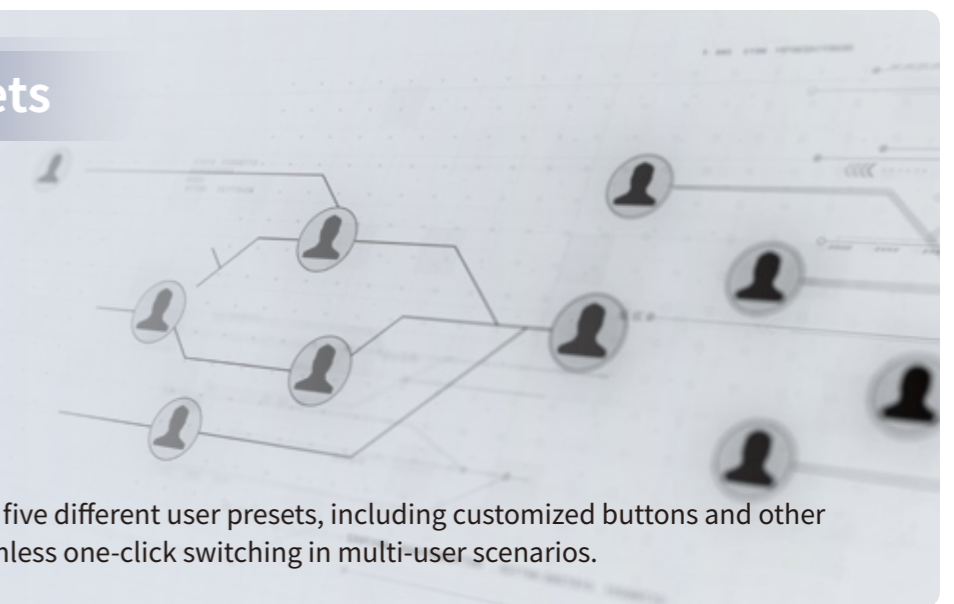


The processor features five customizable buttons, and when connected to either flexible or rigid endoscopy handles, additional customizable buttons are available. This setup enables convenient operation of specific functions during procedures.

Multi-user Presets

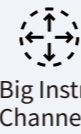
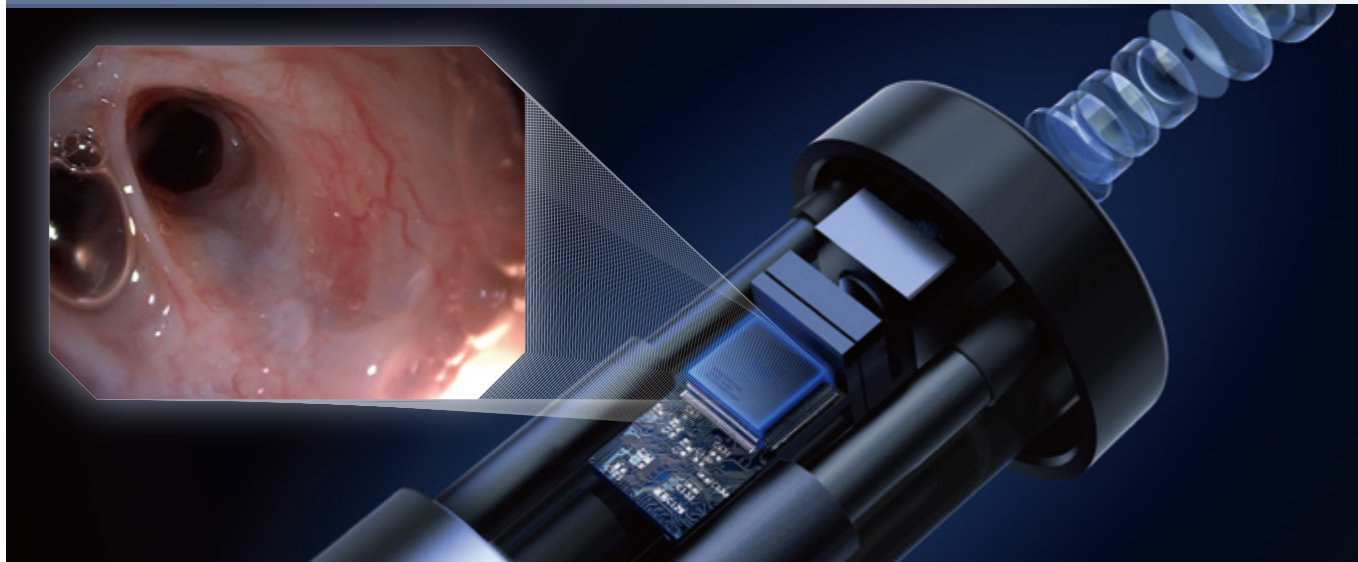


Multi-user settings



Multi-user settings allow up to five different user presets, including customized buttons and other default settings, enabling seamless one-click switching in multi-user scenarios.

Full HD Flexible Endoscopy Solution

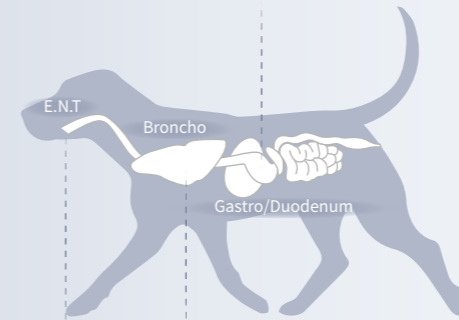


Flexible Endoscope

Model	Working Length (mm)	Diameter of Insertion tube (mm)	Diameter of Instrument (mm)	Range of Bending	View of Field
new VET-2812R	1000	2.8	1.2	U180°D130°	120°
new VET-6028R	1500	6.0	2.8	U210°D90°L100°R100°	120°
VET-8028	1500	8.0	2.8	U210°D90°L100°R100°	120°
VET-FHD15	1500	9.8	2.8	U210°D90°L100°R100°	145°
VET-FHD33	3300	9.8	2.8	U210°D90°L100°R100°	145°
VET-FHD35	3500	12.8	3.7	U180°D180°L160°R160°	145°

Canine

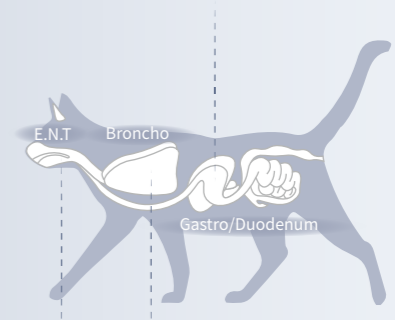
VET-6028R / VET-8028 / VET-FHD15



VET-2812R VET-2812R

Feline

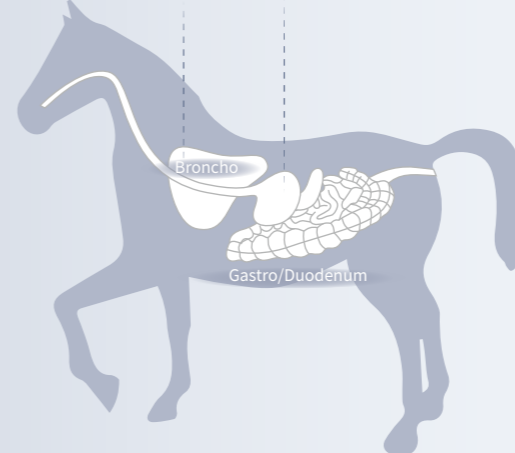
VET-6028R / VET-8028



VET-2812R VET-2812R

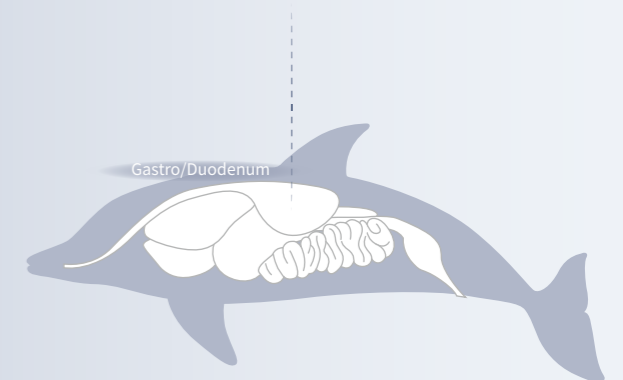
Equine

VET-FHD15 VET-FHD33 / VET-FHD35

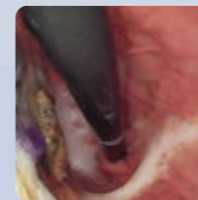


Dolphins

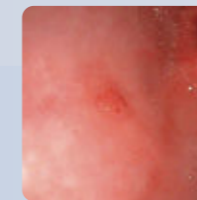
VET-FHD33 / VET-FHD35



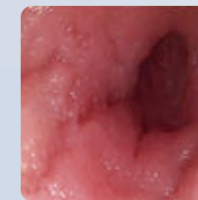
Gastrosocopy



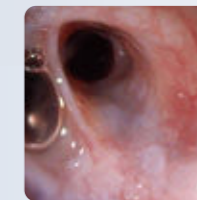
Gastrosocopy



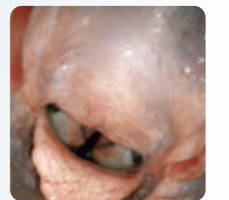
Duodenosocopy



Bronchosocopy



Laryngosocopy



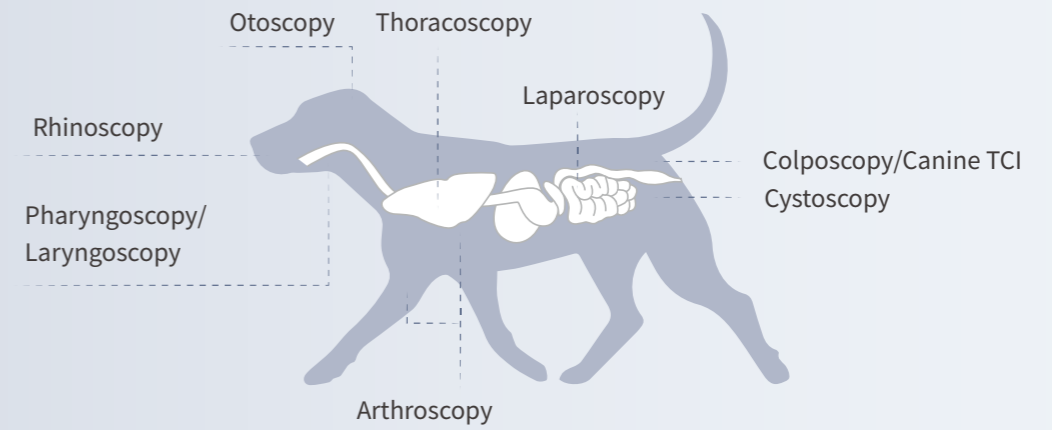
Scan to discover more details of Flexible Endoscopic Accessories



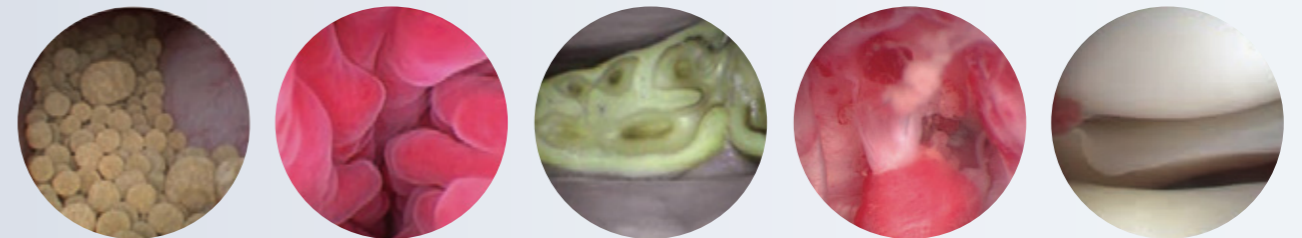
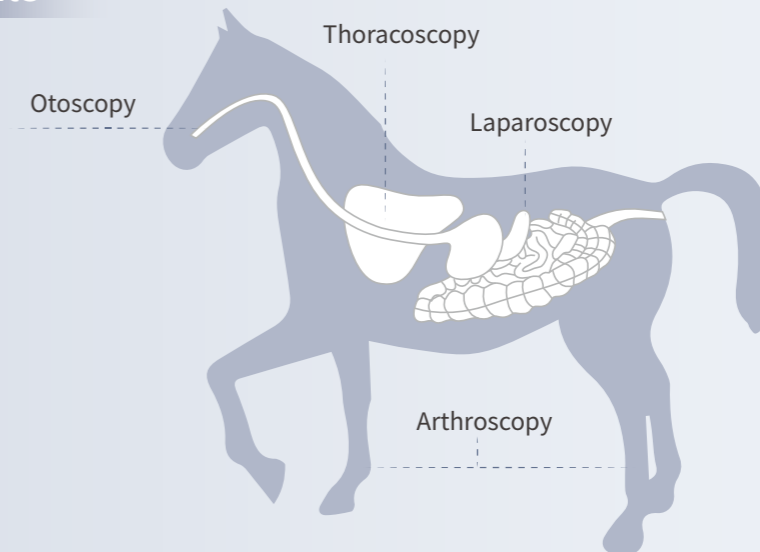
Full HD Rigid Endoscopy Solution



Companion Animals



Big animals



Scan to discover more details of
Rigid Endoscopy Kit



All-in-one Endoscopy Solution

